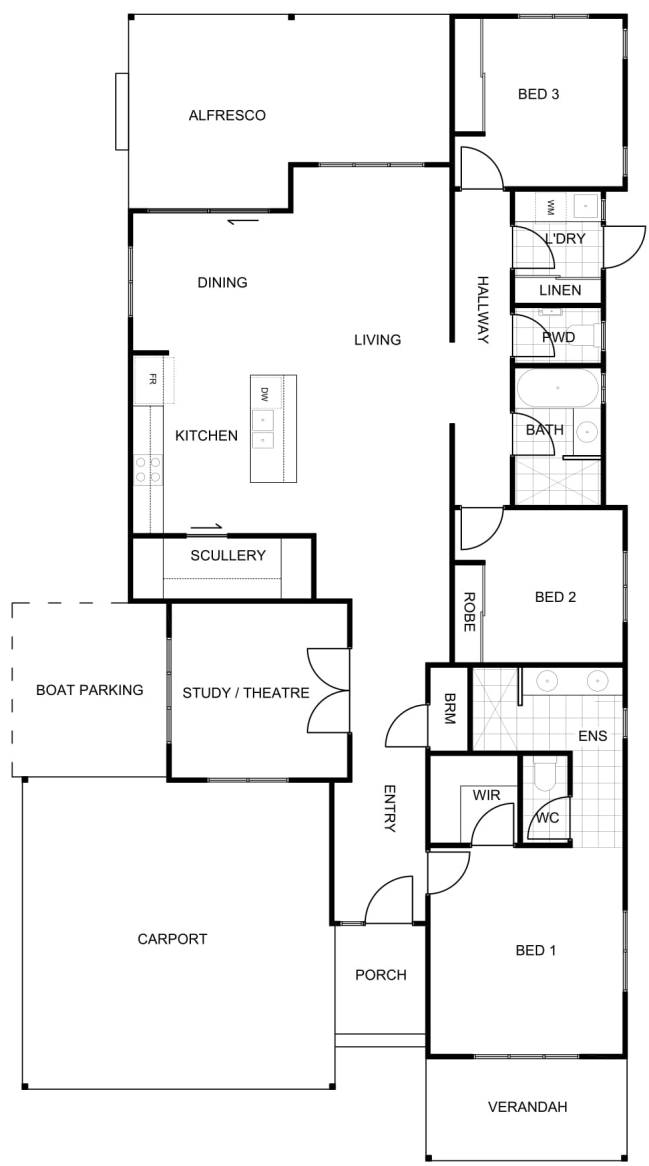




# THE COVE MKII



Residence:	144.94m <sup>2</sup>
Carport:	37.21m <sup>2</sup>
Alfresco:	20.51m <sup>2</sup>
Verandah:	7.84m <sup>2</sup>
Porch:	3.84m <sup>2</sup>
<b>TOTAL BUILDING:</b>	<b>214.34m<sup>2</sup></b>

House Depth: 22.4m  
House Width: 11.8m

### FEATURES:

- Porch Entry with space for a butlers table
- Study or Theatre Room
- Master bedroom features Walk in Robe with a separate spacious Ensuite with private WC and double basins
- Bed 2 and Bed 3 are spacious with Built In Robes
- Modern Kitchen featuring a Scullery with ample pantry space
- Broom closet off Kitchen
- Large Entertaining Alfresco opening up main Living area
- Generous size Laundry and Linen
- Double Carport

