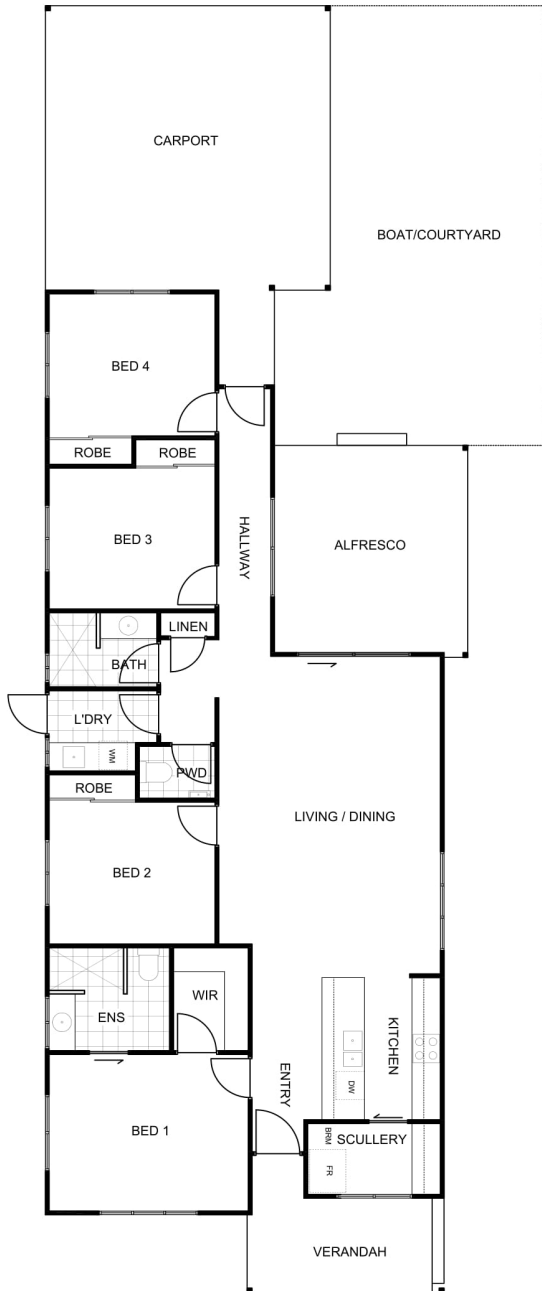




# ONSLOW



Residence:	130.17m <sup>2</sup>
Carport:	37.84m <sup>2</sup>
Alfresco:	20.06m <sup>2</sup>
Verandah:	8.81m <sup>2</sup>
<b>TOTAL BUILDING:</b>	<b>196.88m<sup>2</sup></b>

House Depth:	27.15m
House Width:	8.9m

### FEATURES:

- Shaded Entry opening into Kitchen area
- Master bedroom features spacious Ensuite with separate Walk In Robe
- Bed 2, Bed 3 and Bed 4 all spacious with Built In Robes
- Separate WC to Main Bathroom
- Modern Kitchen featuring a Scullery with ample pantry space
- Large Alfresco opening up main living areas
- Generous size Laundry
- Double Carport

