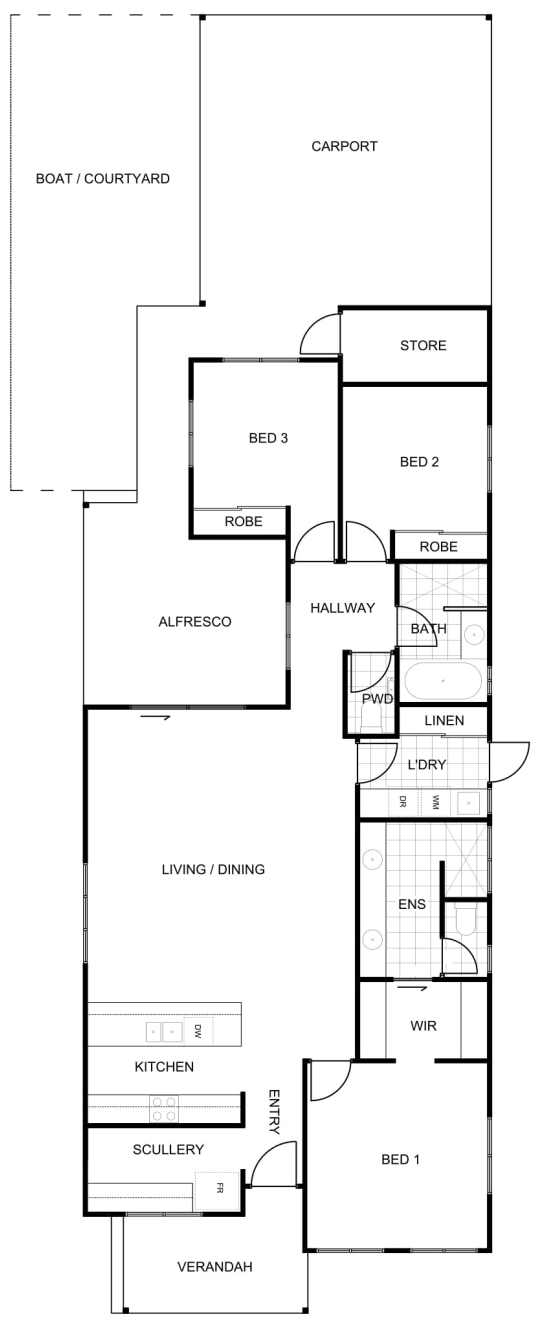




# MONTEBELLO



|                        |                            |
|------------------------|----------------------------|
| Residence:             | 131.43m <sup>2</sup>       |
| Carport:               | 40.78m <sup>2</sup>        |
| Alfresco:              | 20.43m <sup>2</sup>        |
| Verandah:              | 9.44m <sup>2</sup>         |
| <b>TOTAL BUILDING:</b> | <b>202.08m<sup>2</sup></b> |
|                        |                            |
| House Depth:           | 26.75m                     |
| House Width:           | 8.4m                       |

### FEATURES:

- Shaded Entry opening into Kitchen area
- Master bedroom features His/Hers Walk in Robe and spacious Ensuite with private WC and His/Hers basins
- Bed 2 and Bed 3 are spacious with Built In Robes
- Separate WC to Main Bathroom
- Modern Kitchen featuring a Scullery with ample pantry space
- Large Alfresco opening up main living areas
- Generous size Laundry
- Double Carport



ANDREW: 0424 968 900  
 sales@hmtracey.com.au | www.hmtracey.com.au