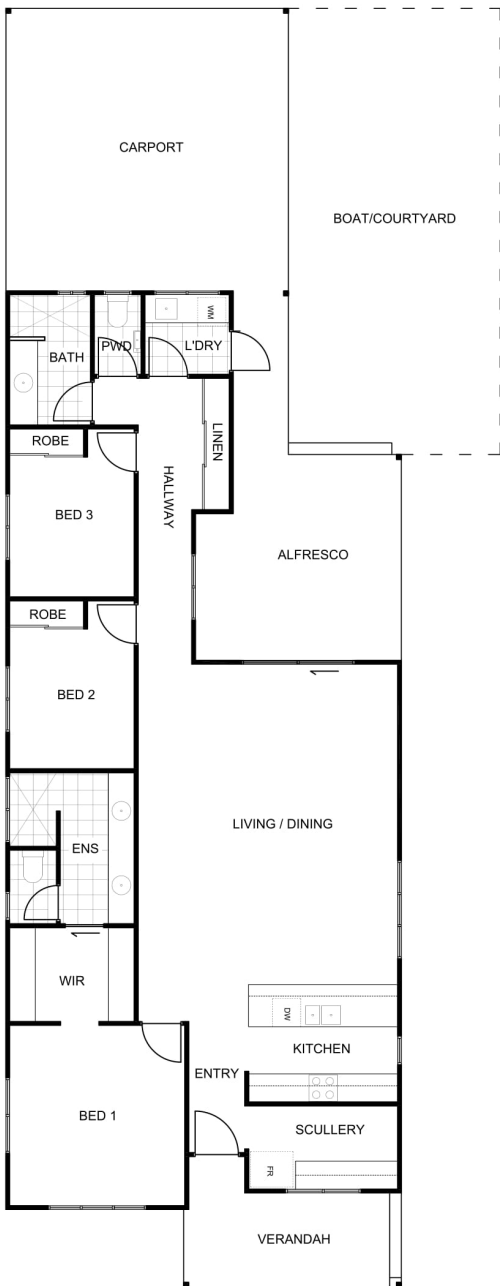




MARBLE BAR



Residence:	128.37m ²
Carport:	36m ²
Alfresco:	20.27m ²
Verandah:	9.96m ²
TOTAL BUILDING:	194.6m²

House Depth:	27.15m
House Width:	8.4m

FEATURES:

- Shaded Entry opening into Kitchen area
- Master bedroom features His/Hers Walk in Robe and spacious Ensuite with private WC and His/Hers basins
- Bed 2 and Bed 3 are spacious with Built In Robes
- Separate WC to Main Bathroom
- Modern Kitchen featuring a Scullery with ample pantry space
- Large Alfresco opening up main living areas
- Laundry and generous size Linen cupboard
- Double Carport



ANDREW: 0424 968 900

sales@hmtracey.com.au | www.hmtracey.com.au